

# PowerOutput™

## The Importance of Output Management

The Austin Software Foundry's PowerOutput class library delivers powerful, high-volume output management, definition, and delivery services to PowerBuilder applications—with minimal programming effort.

PowerOutput offers PowerBuilder developers an easy way to implement an integrated suite of powerful, convenient

output management tools. Without effective output management, the client-server environment is a confused jumble of client-driven protocols and output pathways. Users and MIS managers alike cope daily with the problems arising from this environment. The situation demands a unified, mission-critical, server-driven output man-

agement system. Fortunately, DAZEL Corporation created DAZEL Output Management. DAZEL offers the first unified software solution to elegantly answer the challenge. And PowerOutput offers PowerBuilder developers DAZEL's most important features, with the plug-and-play simplicity of a true software component.

## The Challenge: Simplified Access to Output Management in an Object-Oriented Environment

Austin Software Foundry's team of experienced object-oriented engineers recognized the promise inherent in the value, convenience and sheer power of DAZEL. They also saw that without an effective, non-visu-

al interface for PowerBuilder, too much of this product's potential would lay untapped. They recognized the need to offer PowerBuilder developers a simple, single component to expose DAZEL's most useful

features.

With the combination of PowerOutput and DAZEL, PowerBuilder developers can put the power of mainframe output management in client/server applications.

## What PowerOutput Offers PowerBuilder Developers:

- Unified client/server output management
- Broadcast capability to multiple locations and devices
- Distributed document delivery and tracking
- Delivery notifications via application, e-mail, or pager
- Transparent delivery via printer, fax, e-mail, or pager



AUSTIN SOFTWARE FOUNDRY

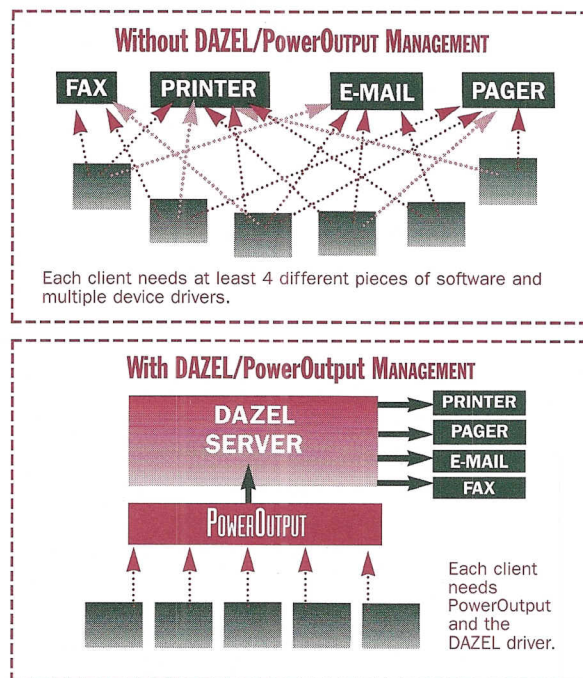


## Easy Access to DAZEL for PowerBuilder Developers

In cooperation, ASF and DAZEL have created a single object-oriented component to make it simple for an organization to implement DAZEL's key functionality in all of its 3.0, 4.0 and future PowerBuilder applications. PowerBuilder developers can design applications implementing DAZEL features with simple, consistent, and intuitive GUI dialogs and menus.

## Extras

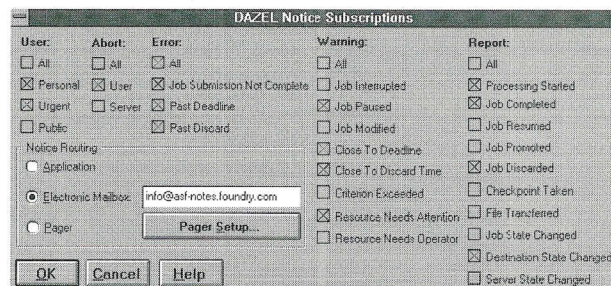
PowerOutput is bundled with three fully-functional sample programs demonstrating how PowerBuilder developers can employ the strengths of PowerOutput. PowerOutput and the included programs are fully compatible with PowerBuilder 3.0 and above.



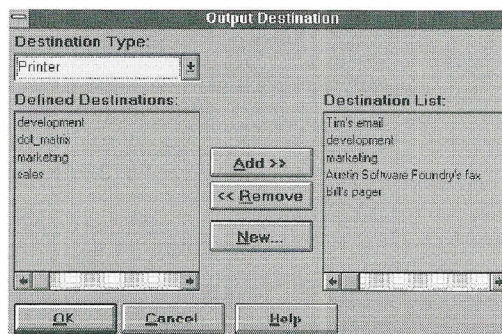
## PowerOutput provides simple access to these DAZEL network output-management features:

- **Login** — a simplified login
- **Subscription and Subscription Maintenance** — allows users to choose to subscribe to messages returned from a DAZEL server
- **Query Services** — requests and reports about all printers and devices on the user's DAZEL network
- **Job Packaging** — bundles various documents and destinations into one package for convenient dispatching. Also simplifies creation of PostScript files for packaging
- **Job Delivery** — delivers documents to a wide variety of destinations including printers, faxes, e-mail addresses, and pagers
- **Job Tracking** — tracks the status of a user's current jobs
- **Message Listings** — records a diary of messages in the background

**SYSTEM REQUIREMENTS:** Windows 3.1 or above,  
PowerBuilder 3.0 or above, access to a DAZEL server



The subscriptions dialog allows users to subscribe to messages returned from a DAZEL server.



The output destination dialog gives users the power to easily select their job's destination.

For licensing or technical information, please contact Austin Software Foundry:

Voice: 1-800-562-5328 (in US or Canada)  
1-512-329-6697; Fax: 1-512-329-6698  
E-mail: info@asf-notes.foundry.com  
Internet: http://www.foundry.com



AUSTIN SOFTWARE FOUNDRY

**Austin Software Foundry**  
500 Capital of Texas Highway North  
Bld. 8, Suite 190, Austin, TX, 78746